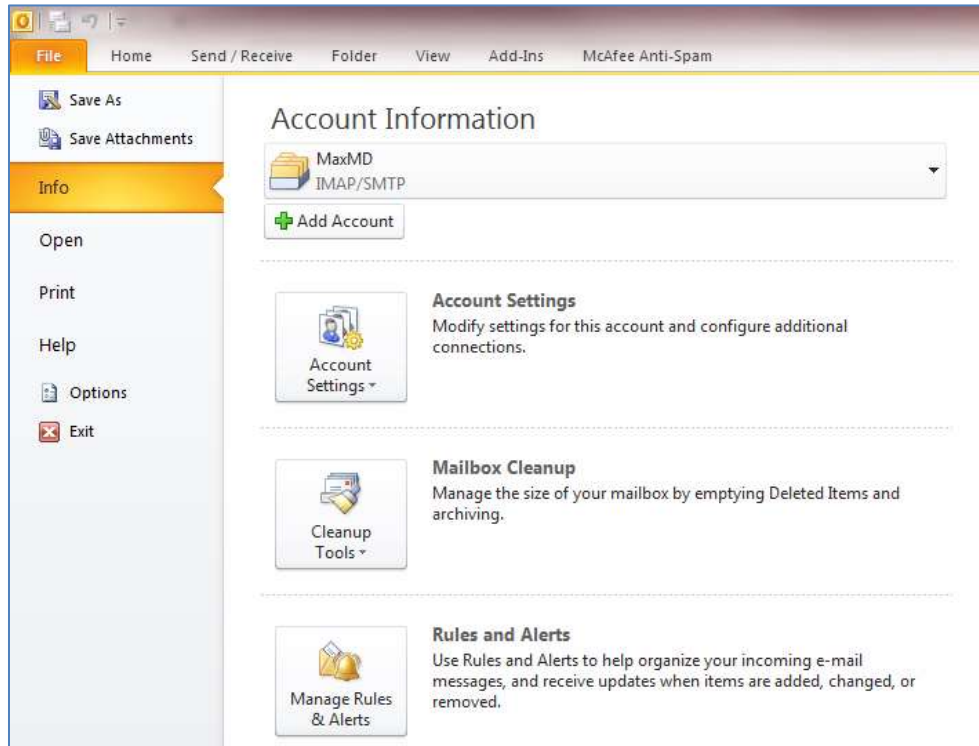
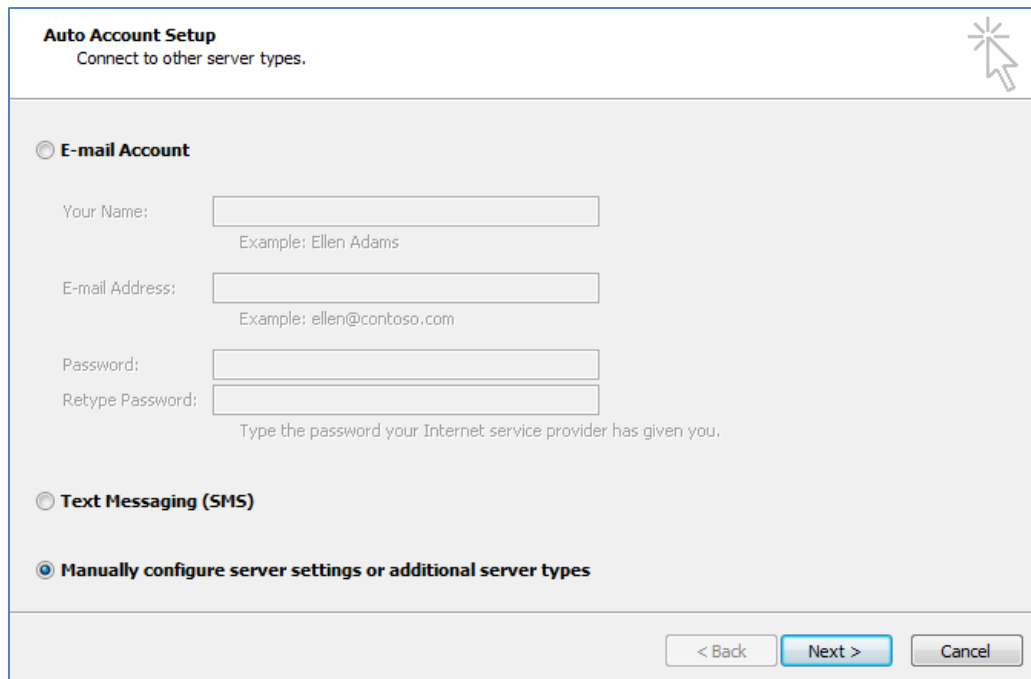


Configure your Direct Address with Microsoft Outlook 2010

1. Launch Microsoft Outlook
2. Under the File tab select “Add Account”




3. Select “Manually configure server settings or additional server types” and click next



4. Configure your Internet e-mail settings as the following:
 - a. Your Name: a name associated with your Direct Address
 - b. E-mail Address: your Direct Address
 - c. Account Type: IMAP
 - d. Incoming mail server: imap.mdemail.md
 - e. Outgoing mail server: directo.mdemail.md
 - f. User Name: your Direct Address
 - g. Password: your password

Internet E-mail Settings
Each of these settings are required to get your e-mail account working.


User Information
Your Name:
E-mail Address:
Server Information
Account Type:
Incoming mail server:
Outgoing mail server (SMTP):
Logon Information
User Name:
Password:
 Remember password
 Require logon using Secure Password Authentication (SPA)
Test Account Settings
After filling out the information on this screen, we recommend you test your account by clicking the button below. (Requires network connection)

 Test Account Settings by clicking the Next button

5. Select "More Settings"
6. Under the General tab, name your Direct Address in a way to differentiate from your other email accounts on Outlook
7. Under Advanced tab, input the following settings:
 - a. Incoming server (IMAP): 993
 - b. Use the following type of encrypted connection: SSL
 - c. Outgoing server (SMTP): 465
 - d. Use the following type of encrypted connection: SSL
8. Click OK
9. Click Next to test your settings
10. Click Finish.